



## **INSTALLATION INSTRUCTIONS FOR SUPER CAB LONG BED 7020217**

**Important Notice: This tank was NOT designed to be used with this truck configuration. Any attempt to install this tank in a Super Cab Long Bed truck is undertaken at the risk of the customer and installer.**

Please read these instructions carefully and completely before starting the installation.

The super cab long bed truck has the same stock tank as the crew cab short bed tank. For this reason, these trucks very similar in setup. The main difference is that the cross member for the front support is in a different location. For most of this installation, follow the standard installation instructions for the 7020217.

- | Step | Description   |
|------|---|
| 1    | Before Step 24/Fig. 14 in the standard 7020217 instructions, the front support area must be modified. The cross member for the front support is too far forward for this tank and doesn't work as intended for our regular front support. |
| 2    | Remove the plastic clip holding the fuel lines from the frame. Remove the back half of the clip (including the Christmas tree fasteners) and the bottom-line position. Trim the back of the remaining portion so that it's mostly smooth. |

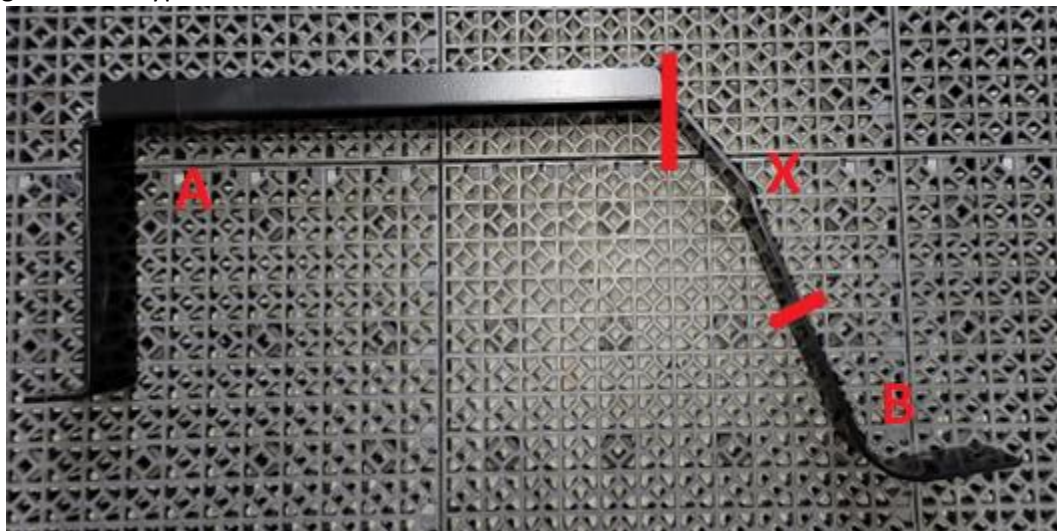


Before



After

- 3 Take the upper bracket of the front support and cut it on the red lines in the picture below. Remove the extra piece (marked X) between the two cuts. Install the larger piece (A) to the cross member as per Fig. 14 in the typical instructions.



- 4 Take the smaller piece of the upper bracket (B) and bend it to a 90 deg angle. Place the larger end of piece B flush against the frame so that the foot of this section extends out under the frame rail. There should be roughly 3/4" of space between the bottom of the frame and the foot of the bracket. (See installed picture below for reference.)
- 5 Because this upper bracket was originally one piece, position piece B so that it's in line with piece A. Mark the position of this short section on the frame.
- 6 Before you mount this short section of bracket, place the flanged front support bolt through the hole. It will be difficult to get in place after this bracket is mounted.
- 7 Mount this short section using your preferred method.
  - a. We chose to mount it using the two holes the fuel line clip was mounted in. We installed (2) 1/4"-20 plusnuts in the frame and drilled holes in piece B.
  - b. It would also be possible to weld this bracket into place.  
**IMPORTANT NOTICE:** All of our straps are galvanized. If you weld this bracket to the frame, make sure to take proper precautions to not breathe toxic fumes.



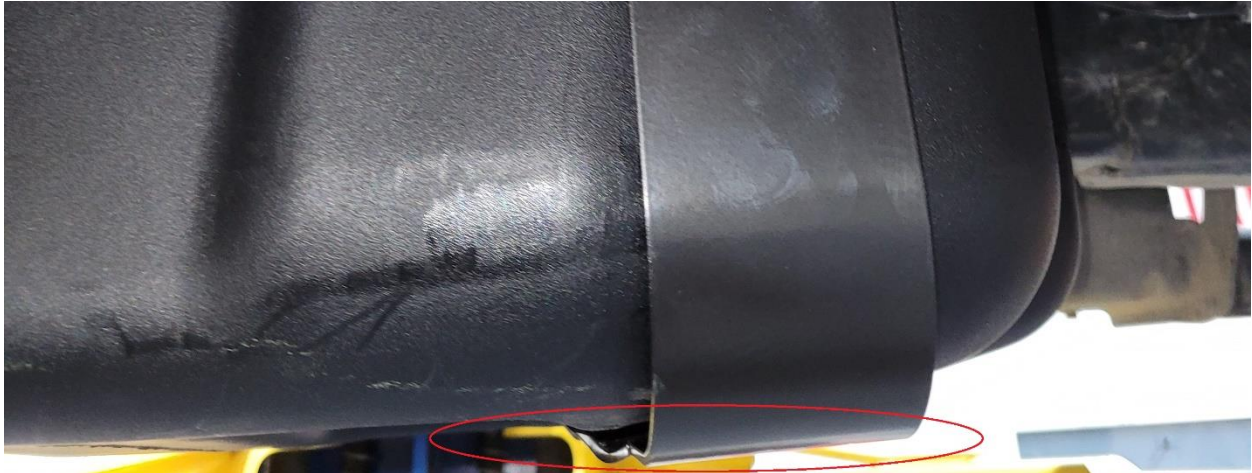
- 8 This cross member has an angled gusset that mounts the cross member to the frame. The tank has a notch in the original location to account for this gusset, but that notch doesn't extend to the new location. For that reason, the gusset will need to be notched to allow the tank to sit properly up against the cross member.



- 9 The fuel lines are made of rigid nylon. They can handle some heat, but too much will damage your fuel lines. We wrapped aluminum foil around the fuel lines to prevent them from being hit with sparks during the trimming process.
- 10 Use a cutting wheel to notch this gusset. As this gusset is at an angle and surrounded by easily damaged fuel lines, makes sure to exercise EXTREME caution and control to prevent damaging your vehicle. We left roughly 3/8" of the top section of the gusset to continue to add some support to the frame. We cut three quarters of the way across the gusset starting from the right edge. The bottom edge of the cutout was roughly halfway up the gusset.



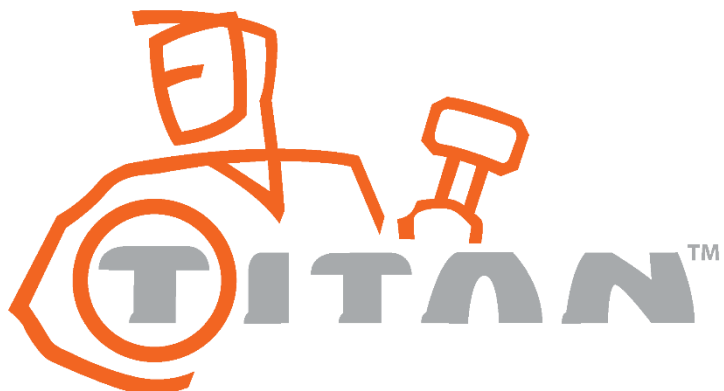
- 11 After this notch is cut, deburr the rough edges. Paint any edge that got cut (include pieces A and B of the upper bracket) with black spray paint to inhibit corrosion. We also chose to slice open a short section of hose and wrap it around the trimmed hole to protect the tank from any rough edges.
- 12 The bottom strap of the front support has a flange that is supposed to extend up into a pocket on the bottom of the tank. This flange may need to be angled, unbent, or completely removed depending on the final location of piece B. If this flange is trimmed off, paint the edge with black spray paint.



- 13 Finish mounting the tank per the typical instructions. When mounting the front support, attach the outboard bolt before the bolt next to the driveshaft.
- 14 If you have some slack between the bottom of the front support and the tank, you can shim it into place with rubber sheet.



- 15 Before taking the truck off the lift, check the gap between the tank and the driveshaft. We recommend achieving 2" of clearance between the tank and the driveshaft.



TITAN Fuel Tanks™  
P.O. Box 2225  
Idaho Falls, ID 83403 USA  
Telephone (208) 522-1325, FAX (208) 529-2162  
[www.titanfueltanks.com](http://www.titanfueltanks.com)

For patent information: <http://titanfueltanks.com/patents>

***TITAN Fuel Tanks are PROUDLY MADE IN THE USA!***

©2024 Supertanks, LLC. All rights reserved.