

TITAN pt. no.: 99 0000 0735

TITAN™ Fuel Tanks

TITAN™ Sidekick™, Portable Liquid Transfer Tank

INSTALLATION GUIDE

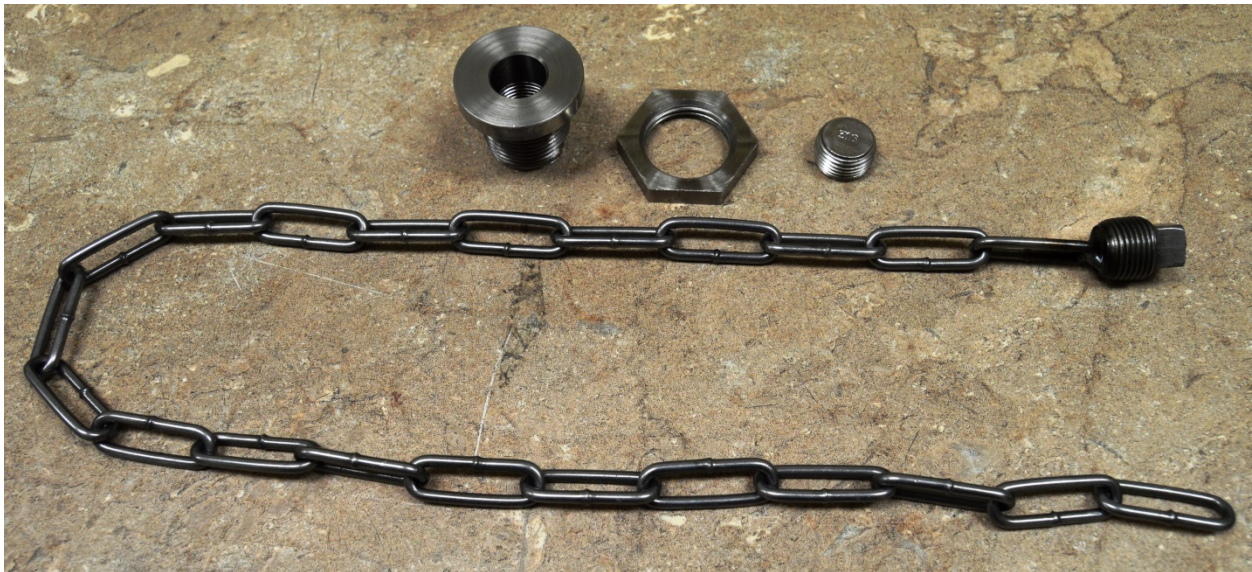
Stainless Steel, Bulkhead Drain Kit for *SideKick*™

- Components needed to install drain plug in the bottom of the SideKick™. Includes tool for threading into hole which will need to be drilled by installer. Made of 303 stainless steel for compatibility with DEF if necessary. **Note: Only for use with diesel fuel or nonflammable liquids. It cannot be used with flammables such as gasoline.**

99 0161 0000 *SideKick*™ Bulkhead Drain Kit

Required Tools:

- | | |
|-------|-------------------------------|
| 1 ea. | Electric Drill |
| 1 ea. | 1" Hole Saw |
| 1 ea. | 8" Adjustable Spanner Wrench |
| 1 ea. | 12" Adjustable Spanner Wrench |



99 0161 0000 *SideKick*™ Bulkhead Drain Kit Parts List

<u>Part Description</u>	<u>TITAN Part Number</u>	<u>Quantity</u>
Chain and Plug Weldment	99 0000 0696	1
MAS Bulkhead Assembly	99 0000 0697	1
3/8" NPT Hex Socket Plug	99 0000 0533	1

Step Description

- 1 Using 1" Hole Saw, cut hole in the center of the indented feature on the bottom of the tank as shown below.



- 2 Thread the chain and plug weldment through the bulkhead fitting as shown below. Screw plug loosely into the bulkhead fitting.



3 Drop bulkhead assembly through fill neck on chain as shown.



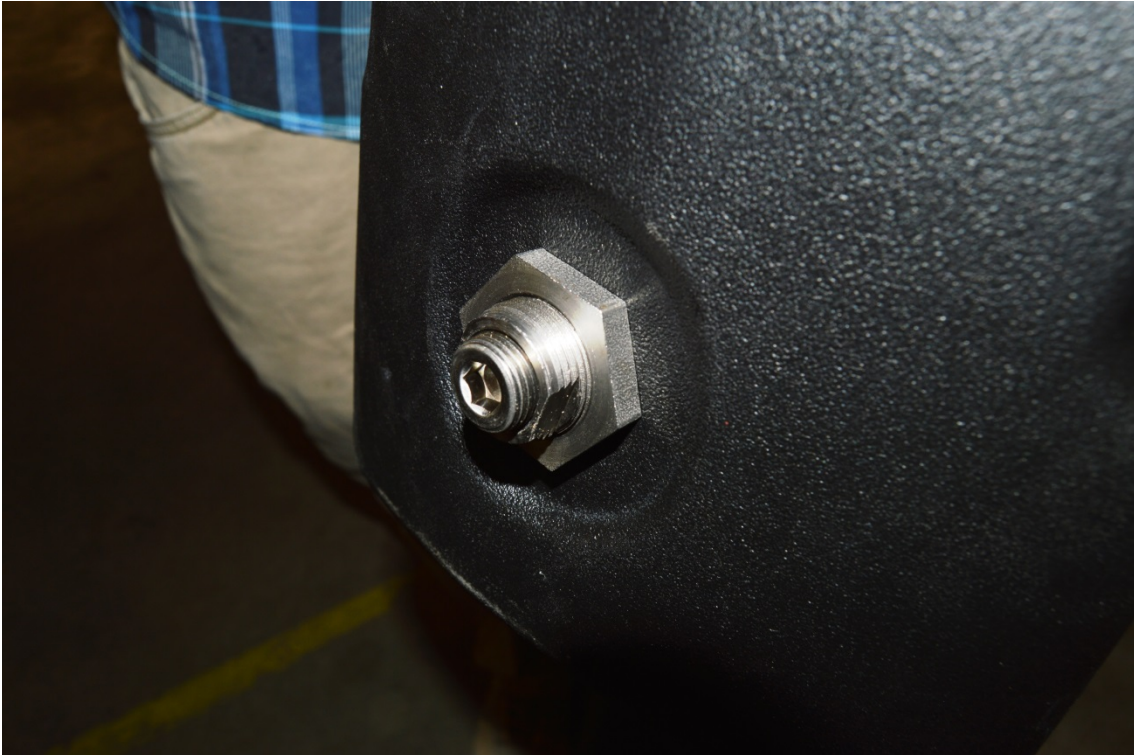
- 4 Thread bulkhead fitting through hole, install jam nut and remove the chain and plug.



- 5 Tighten jam nut using spanners.



- 6 Install and tighten 3/8" NPT Hex Socket Plug, if desired, and installation is complete.



**P.O. Box 2225
Idaho Falls, ID 83403 USA
Telephone (800) 728-4982 FAX (208) 529-2162**

www.titanfuel tanks.com

TITAN Fuel Tanks™ are PROUDLY MADE IN THE USA

Revised 12.03.15

©2015 Supertanks, LLC

All Rights Reserved.